

CONTRABASS FLUTE

WHITE CHRISTMAS

FOR JAZZ FLUTE BIG BAND HOLIDAY PLAY-ALONG

IRVING BERLIN
ARR. KENJI KONNO

BOSSA ♩ = 118

COUNT-OFF DRUM

Drum notation for the count-off and first measure. The count-off consists of two measures of quarter notes: x, 7, x, 7. The first measure of the piece consists of four measures of quarter notes: x, x, x, x. The drum part then continues with a series of eighth notes.

5 **A** 5 mp

Musical staff for section A, measures 5-8. Measure 5 is a whole rest. Measure 6 starts with a five-measure rest, followed by a quarter note G4, a quarter note F#4, and a quarter note E4. Measure 7 continues with a quarter note D4, a quarter note C4, and a quarter note B3. Measure 8 is a whole rest. The dynamic marking is *mp*.

14 **B** 3

Musical staff for section B, measures 14-17. Measure 14 is a whole rest. Measure 15 starts with a three-measure rest, followed by a quarter note G4 with an accent (>), a quarter note F#4, and a quarter note E4. Measure 16 continues with a quarter note D4, a quarter note C4, and a quarter note B3. Measure 17 is a whole rest.

22 2

Musical staff for section B, measures 22-25. Measure 22 starts with a quarter note G4, a quarter note F#4, and a quarter note E4. Measure 23 continues with a quarter note D4, a quarter note C4, and a quarter note B3. Measure 24 is a whole rest. Measure 25 is a whole note G4. The dynamic marking is *mf*.

30 **C** mf

Musical staff for section C, measures 30-35. Measure 30 starts with a quarter note G4, a quarter note F#4, and a quarter note E4. Measure 31 continues with a quarter note D4, a quarter note C4, and a quarter note B3. Measure 32 is a whole rest. Measure 33 is a whole note G4. Measure 34 is a whole note F#4. Measure 35 is a whole note E4. The dynamic marking is *mf*.

36

Musical staff for section C, measures 36-40. Measure 36 starts with a quarter note G4, a quarter note F#4, and a quarter note E4. Measure 37 continues with a quarter note D4, a quarter note C4, and a quarter note B3. Measure 38 is a whole rest. Measure 39 is a whole note G4. Measure 40 is a whole note F#4. The dynamic marking is *mf*.

41

Musical staff for section C, measures 41-45. Measure 41 starts with a quarter note G4, a quarter note F#4, and a quarter note E4. Measure 42 continues with a quarter note D4, a quarter note C4, and a quarter note B3. Measure 43 is a whole rest. Measure 44 is a whole note G4. Measure 45 is a whole note F#4. The dynamic marking is *mf*.

46 **D** 5

Musical staff for section D, measures 46-49. Measure 46 is a whole rest. Measure 47 starts with a five-measure rest, followed by a quarter note G4, a quarter note F#4, and a quarter note E4. Measure 48 continues with a quarter note D4, a quarter note C4, and a quarter note B3. Measure 49 is a whole rest. The dynamic marking is *mf*.

CONTRABASS FLUTE

E PLAY-ALONG SOLO

55 Dmaj7 F#7(#5) Em7 Eb°

59 Gmaj7 C#7(#9) F#m7 F7 (BACKGROUND) Em7 A7(b9)

p

63 Dmaj7 D7 Gmaj7 C13

67 Bm7 E7(SUS4) Em7 A7(b9)

71 Dmaj7 F#7(#5) Em7 Eb°

75 Gmaj7 C#m7 G7(#11)/B F#m7/A G#7(#11)

79 Gmaj7 Cmaj9 Bm9 Bbmaj13

83 Em7 A7(SUS4) Ebmaj7 Dmaj7

mp

F PIANO SOLO

87 6 BACKGROUND 5

p

103 3

109 2

115 G

mf

119

123

127

131

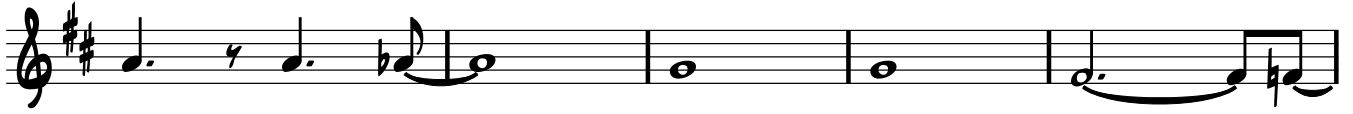
135

139 H

CONTRABASS FLUTE

4

145



150



155

